

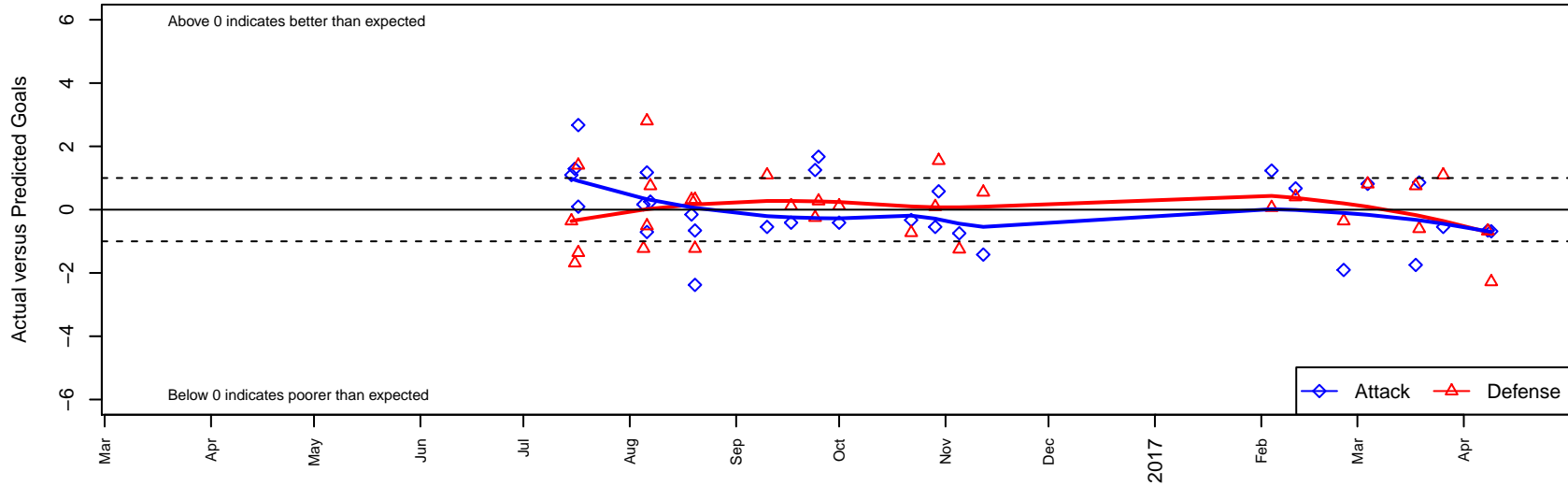
# TC United White G03

Thurston County United  
 Lacey, WA  
 G03 total strength=955  
 attack=1.88 defense=1.56  
 fall league = PSPL Classic 2 Blue U14  
 spr league = Spr PSPL Classic 2 U14  
 notes= Jorgenson 2016

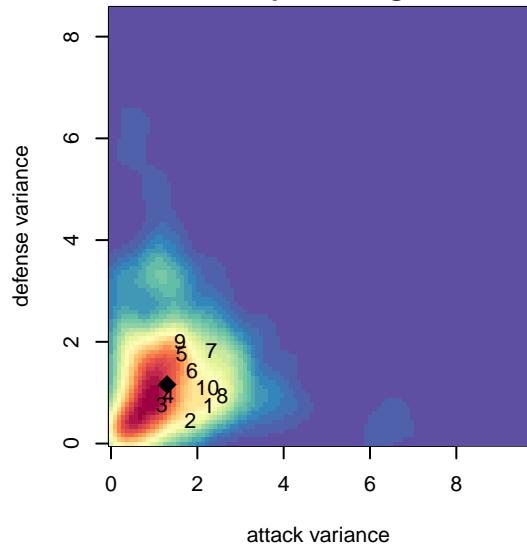
alt names used:  
 TC United G03 White  
 TC United G03 White  
 TC United G03 White – Jorgenson  
 TC United G03 White–Jorgenson  
 TC United G03 White–Jorgenson  
 TC United G03 White–Jorgenson  
 TC UNITED G03 WHITE–JORGENSEN (WA)

Venues played:  
 2016 KITG GU14 Green  
 2016 Blast Off G2003 B  
 2016 Xtreme Cup GU14  
 2016 PSPL Classic 2 Blue U14  
 2016 Spr PSPL Classic 2 U14  
 2016 WA Cup U14 Silver U14

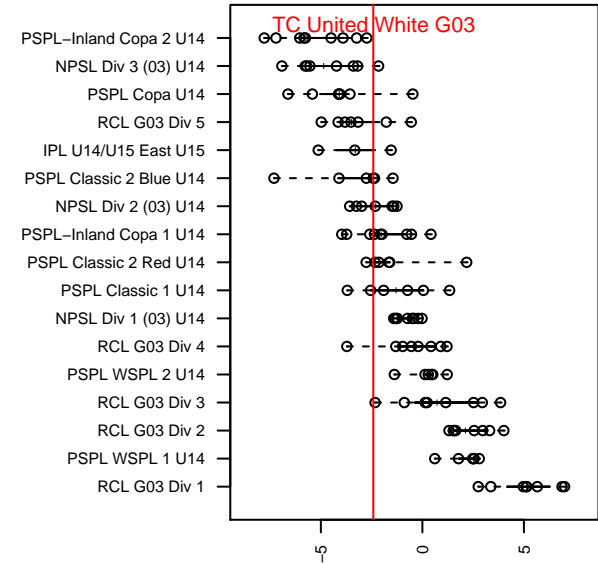
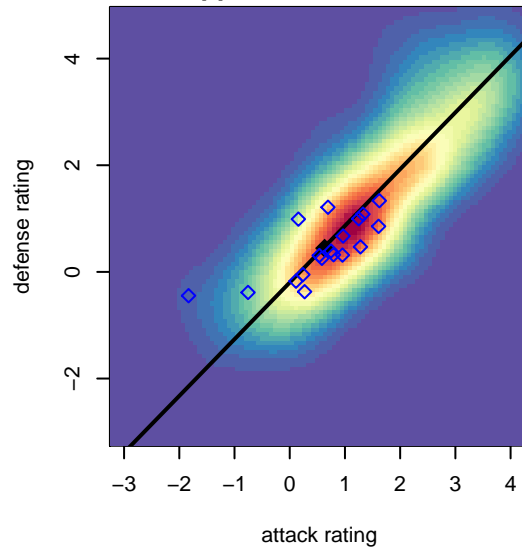
**TC United White G03**  
 Dots are actual minus expected GF (blue circles) and GA (red triangles).  
 Blue line is smoothed change in attack strength. Red is smoothed change in defense strength.



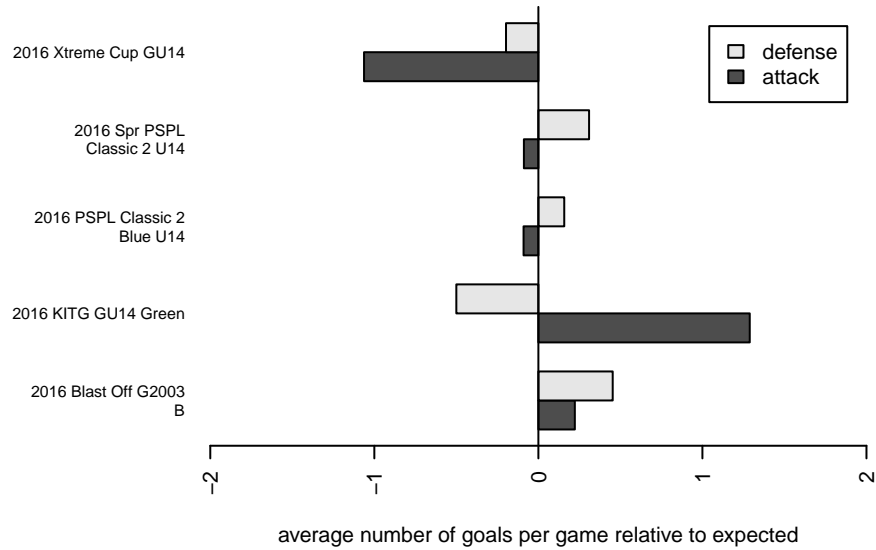
**attack and defense variance (black dot)  
relative to other teams  
and top 10 in region**



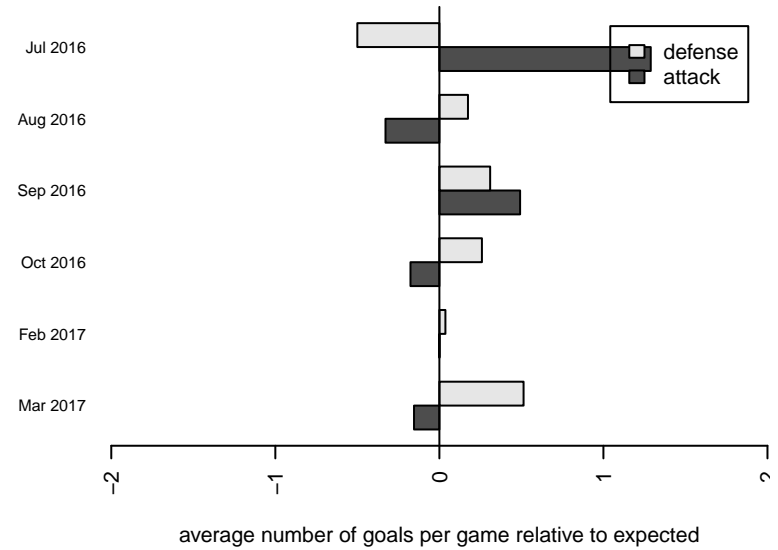
**attack and defense rating  
relative to others at age  
and all opponents in last 13 months**



**Performance relative to 13 month average**



**Performance relative to 13 month average**



| <b>date</b> | <b>home</b>                         |   | <b>away</b>                         |   | <b>venue</b>                 | <b>pred.home</b> | <b>pred.away</b> |
|-------------|-------------------------------------|---|-------------------------------------|---|------------------------------|------------------|------------------|
| 2017-04-09  | TC United White G03                 | 0 | Highline Premier Blue G03           | 5 | 2016 WA Cup U14 Silver U14   | 0.68             | 2.72             |
| 2017-04-08  | SGESC Fusion Navy G03               | 3 | TC United White G03                 | 0 | 2016 WA Cup U14 Silver U14   | 2.32             | 0.66             |
| 2017-03-26  | TC United White G03                 | 1 | CWSA White G03                      | 0 | 2016 Spr PSPL Classic 2 U14  | 1.55             | 1.10             |
| 2017-03-19  | MVP Marauders White G03             | 2 | TC United White G03                 | 2 | 2016 Spr PSPL Classic 2 U14  | 1.40             | 1.14             |
| 2017-03-18  | Wenatchee Valley United Tigers G03  | 0 | TC United White G03                 | 1 | 2016 Spr PSPL Classic 2 U14  | 0.75             | 2.75             |
| 2017-03-04  | TC United White G03                 | 3 | Emerald City FC Green G03           | 0 | 2016 Spr PSPL Classic 2 U14  | 2.18             | 0.81             |
| 2017-02-25  | Shoreline SC Verrou G03             | 2 | TC United White G03                 | 0 | 2016 Spr PSPL Classic 2 U14  | 1.64             | 1.91             |
| 2017-02-11  | TC United White G03                 | 2 | CSC Velocity Green G03              | 1 | 2016 Spr PSPL Classic 2 U14  | 1.33             | 1.40             |
| 2017-02-04  | Nortac Sparta White G03             | 1 | TC United White G03                 | 3 | 2016 Spr PSPL Classic 2 U14  | 1.07             | 1.77             |
| 2016-11-12  | TC United White G03                 | 0 | ISC Gunners B G03                   | 1 | 2016 PSPL Classic 2 Blue U14 | 1.42             | 1.55             |
| 2016-11-05  | TC United White G03                 | 2 | Wenatchee Valley United Tigers G03  | 2 | 2016 PSPL Classic 2 Blue U14 | 2.75             | 0.75             |
| 2016-10-30  | ISC Gunners B G03                   | 0 | TC United White G03                 | 2 | 2016 PSPL Classic 2 Blue U14 | 1.55             | 1.42             |
| 2016-10-29  | TC United White G03                 | 1 | CWSA White G03                      | 1 | 2016 PSPL Classic 2 Blue U14 | 1.55             | 1.10             |
| 2016-10-22  | TC United White G03                 | 1 | Wenatchee Valley United Kodiaks G03 | 3 | 2016 PSPL Classic 2 Blue U14 | 1.33             | 2.27             |
| 2016-10-01  | NPSA Titans Navy G03                | 0 | TC United White G03                 | 3 | 2016 PSPL Classic 2 Blue U14 | 0.12             | 3.41             |
| 2016-09-25  | Wenatchee Valley United Kodiaks G03 | 2 | TC United White G03                 | 3 | 2016 PSPL Classic 2 Blue U14 | 2.27             | 1.33             |
| 2016-09-24  | Wenatchee Valley United Tigers G03  | 1 | TC United White G03                 | 4 | 2016 PSPL Classic 2 Blue U14 | 0.75             | 2.75             |
| 2016-09-17  | TC United White G03                 | 3 | NPSA Titans Navy G03                | 0 | 2016 PSPL Classic 2 Blue U14 | 3.41             | 0.12             |
| 2016-09-10  | CWSA White G03                      | 0 | TC United White G03                 | 1 | 2016 PSPL Classic 2 Blue U14 | 1.10             | 1.55             |
| 2016-08-20  | SGESC Fusion Navy G03               | 2 | TC United White G03                 | 0 | 2016 Xtreme Cup GU14         | 2.32             | 0.66             |
| 2016-08-20  | TC United White G03                 | 0 | FC Bellevue Hypervenoms G03         | 2 | 2016 Xtreme Cup GU14         | 2.38             | 0.77             |
| 2016-08-19  | TC United White G03                 | 3 | UPSC Storm G03                      | 0 | 2016 Xtreme Cup GU14         | 3.15             | 0.31             |
| 2016-08-07  | TC United White G03                 | 3 | Wenatchee Valley United Tigers G03  | 0 | 2016 Blast Off G2003 B       | 2.75             | 0.75             |
| 2016-08-06  | Southlake Select Patriots G03       | 3 | TC United White G03                 | 0 | 2016 Blast Off G2003 B       | 2.49             | 0.71             |
| 2016-08-06  | TC United White G03                 | 2 | FME Fusion G03                      | 0 | 2016 Blast Off G2003 B       | 0.82             | 2.80             |
| 2016-08-05  | TC United White G03                 | 1 | RV Slammers Orange G03              | 2 | 2016 Blast Off G2003 B       | 0.83             | 0.77             |
| 2016-07-17  | TC United White G03                 | 4 | CSC Velocity Green G03              | 0 | 2016 KITG GU14 Green         | 1.33             | 1.40             |
| 2016-07-17  | TC United White G03                 | 2 | Shoreline SC Verrou G03             | 3 | 2016 KITG GU14 Green         | 1.91             | 1.64             |

| <b>date</b> | <b>home</b>               |   | <b>away</b>         |   | <b>venue</b>         | <b>pred.home</b> | <b>pred.away</b> |
|-------------|---------------------------|---|---------------------|---|----------------------|------------------|------------------|
| 2016-07-16  | Seattle United W Blue G03 | 3 | TC United White G03 | 2 | 2016 KITG GU14 Green | 1.31             | 0.71             |
| 2016-07-15  | Shoreline SC Verrou G03   | 2 | TC United White G03 | 3 | 2016 KITG GU14 Green | 1.64             | 1.91             |